

**TUFM Antibody (N-term)**  
**Purified Rabbit Polyclonal Antibody (Pab)**  
**Catalog # AP20640a****Specification**

---

**TUFM Antibody (N-term) - Product Information**

Application	IF, WB,E
Primary Accession	<a href="#">P49411</a>
Other Accession	<a href="#">P85834</a> , <a href="#">Q8BFR5</a> , <a href="#">P49410</a>
Reactivity	Human, Mouse, Rat
Predicted	Bovine
Host	Rabbit
Clonality	Polyclonal
Isotype	Rabbit IgG

**TUFM Antibody (N-term) - Additional Information****Gene ID** 7284**Other Names**

Elongation factor Tu, mitochondrial, EF-Tu, P43, TUFM

**Target/Specificity**

This TUFM antibody is generated from a rabbit immunized with a KLH conjugated synthetic peptide between 112-147 amino acids from the N-terminal region of human TUFM.

**Dilution**

IF~~1:25

WB~~1:2000

E~~Use at an assay dependent concentration.

**Format**

Purified polyclonal antibody supplied in PBS with 0.09% (W/V) sodium azide. This antibody is purified through a protein A column, followed by peptide affinity purification.

**Storage**

Maintain refrigerated at 2-8°C for up to 2 weeks. For long term storage store at -20°C in small aliquots to prevent freeze-thaw cycles.

**Precautions**

TUFM Antibody (N-term) is for research use only and not for use in diagnostic or therapeutic procedures.

**TUFM Antibody (N-term) - Protein Information****Name** TUFM**Function** GTP hydrolase that promotes the GTP-dependent binding of aminoacyl-tRNA to the

A-site of ribosomes during protein biosynthesis. Also plays a role in the regulation of autophagy and innate immunity. Recruits ATG5-ATG12 and NLRX1 at mitochondria and serves as a checkpoint of the RIGI-MAVS pathway. In turn, inhibits RLR-mediated type I interferon while promoting autophagy.

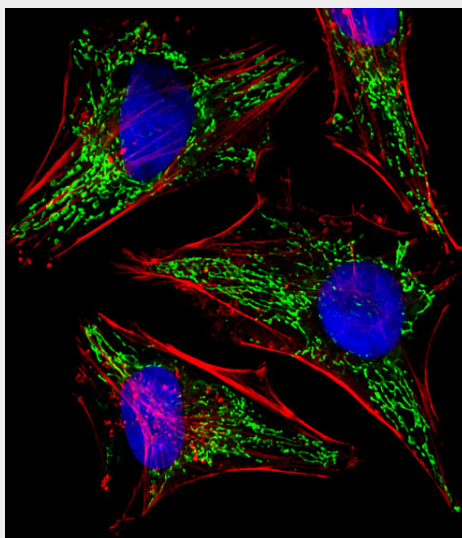
**Cellular Location**

Mitochondrion.

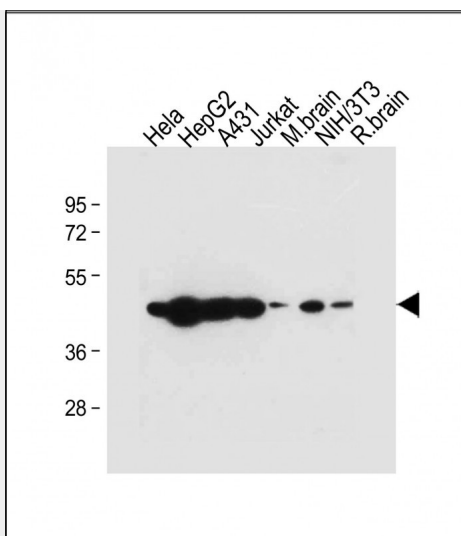
**TUFM Antibody (N-term) - Protocols**

Provided below are standard protocols that you may find useful for product applications.

- [Western Blot](#)
- [Blocking Peptides](#)
- [Dot Blot](#)
- [Immunohistochemistry](#)
- [Immunofluorescence](#)
- [Immunoprecipitation](#)
- [Flow Cytometry](#)
- [Cell Culture](#)

**TUFM Antibody (N-term) - Images**

Fluorescent image of HeLa cells stained with TUFM Antibody (N-term)(Cat#AP20640a). AP20640a was diluted at 1:25 dilution. An Alexa Fluor 488-conjugated goat anti-rabbit IgG at 1:400 dilution was used as the secondary antibody (green). DAPI was used to stain the cell nuclear (blue). Cytoplasmic actin was counterstained with Alexa Fluor® 555 conjugated with Phalloidin (red).



All lanes : Anti-TUFM Antibody (N-term) at 1:2000 dilution Lane 1: HeLa whole cell lysate Lane 2: HepG2 whole cell lysate Lane 3: A431 whole cell lysate Lane 4: Jurkat whole cell lysate Lane 5: Mouse brain tissue lysate Lane 6: NIH/3T3 whole cell lysate Lane 7: Rat brain whole cell lysate Lysates/proteins at 20 µg per lane. Secondary Goat Anti-Rabbit IgG, (H+L), Peroxidase conjugated at 1/10000 dilution. Predicted band size : 50 kDa Blocking/Dilution buffer: 5% NFDM/TBST.

#### **TUFM Antibody (N-term) - Background**

This protein promotes the GTP-dependent binding of aminoacyl-tRNA to the A-site of ribosomes during protein biosynthesis.

#### **TUFM Antibody (N-term) - References**

Worlax V.L.,et al.Biochim. Biophys. Acta 1264:347-356(1995).  
Wells J.,et al.FEBS Lett. 358:119-125(1995).  
Ling M.,et al.Gene 197:325-336(1997).  
Martin J.,et al.Nature 432:988-994(2004).  
Dunn M.J.,et al.Submitted (MAR-1996) to UniProtKB.